

SEE WHO'S RUNNING TO LEAD YOUR UNION.

Your Union is
in your hands.
Voting open
14 - 18 March

Get to know your candidates
& get ready to vote!

#JOINOURJOURNEY
hallamstudentsunion.com/vote

Sheffield
Hallam
Students'
Union

Election 2022

STUDENTS' UNION PRESIDENT

THE PRESIDENT IS THE LEADER OF THE STUDENT OFFICER TEAM, WITH A SEAT ON THE HIGHEST GOVERNING BOARDS OF THE UNIVERSITY. THEY'RE THE LEAD OFFICER FOR THE DEVELOPMENT AND STRATEGIC MANAGEMENT OF THE STUDENTS' UNION, AND ARE THE FIGUREHEAD FOR ALL STUDENT REPRESENTATION..



CANDIDATE FOR STUDENTS' UNION PRESIDENT



SABAHAT KHAN

GIVE US 3 WORDS TO DESCRIBE YOURSELF

Vibrant, confident, dependable!

WHAT COURSE DO YOU STUDY?

MSc Public Health graduate.

WHAT IS THE MAIN POLICY YOU WOULD IMPLEMENT IF YOU WON THE ELECTION?

Consistent online academic support policy.

WHAT MAKES YOU PROUD TO BE PART OF THE HALLAM COMMUNITY?

The opportunities that the Hallam community provides to all student groups to represent and voice their ideas for a positive social impact.

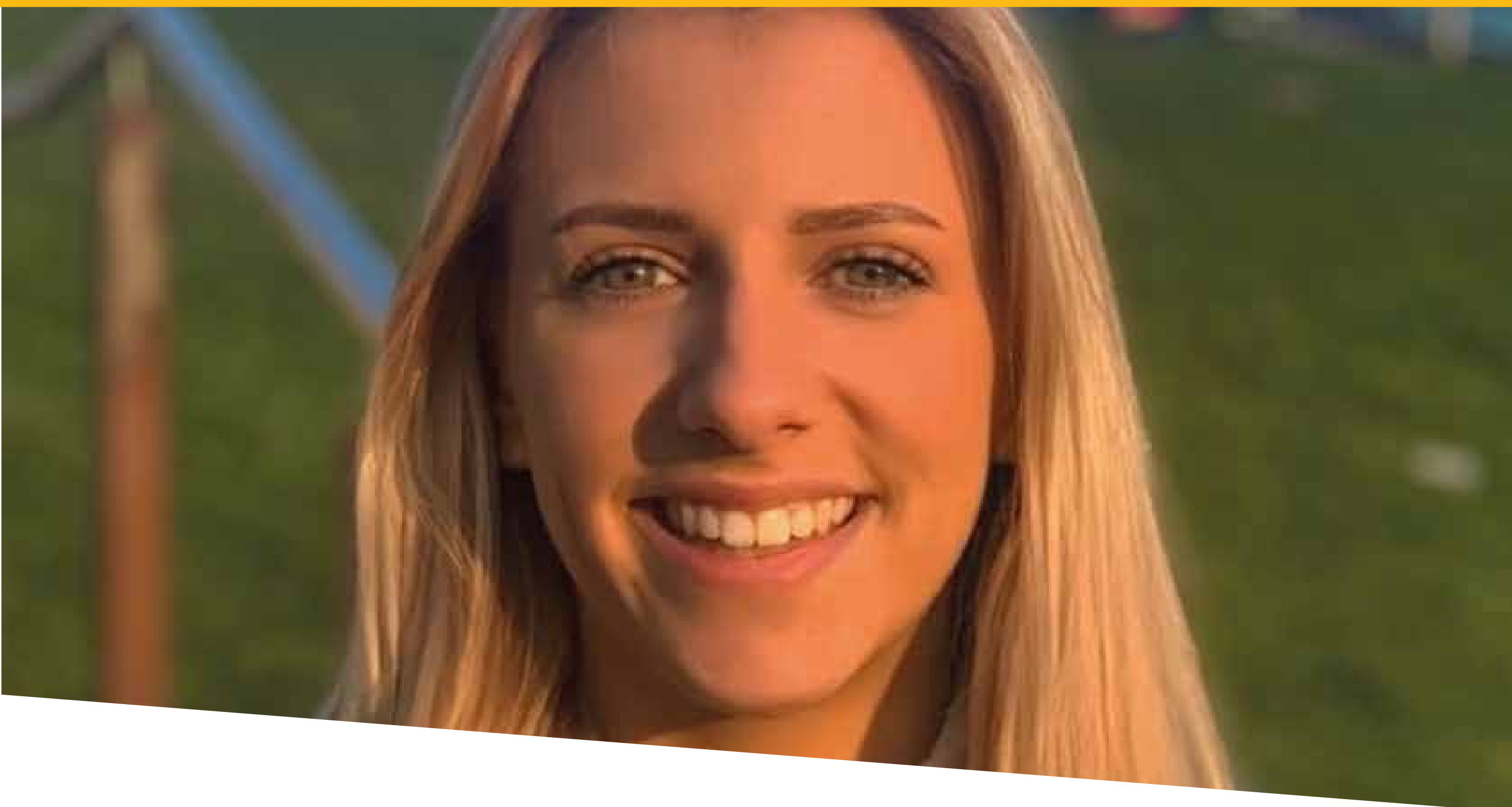
WHAT ARE THE 3 MAIN ISSUES FACING STUDENTS?

Academic, assessment and digital issues; lack of student engagement activities; financial concerns.

WHY SHOULD STUDENTS VOTE FOR YOU?

So that you elect a strong, relatable and approachable student leader who is striving to provide a wholesome post covid student experience on campus.

CANDIDATE FOR STUDENTS' UNION PRESIDENT



SCARLET PARR

GIVE US 3 WORDS TO DESCRIBE YOURSELF

Confident, Committed, Caring

WHAT COURSE DO YOU STUDY?

Well-being, Sport and Physical Activity Officer / Degree in Sport Business Management.

WHAT IS THE MAIN POLICY YOU WOULD IMPLEMENT IF YOU WON THE ELECTION?

Free period products in bathrooms across campus.

WHAT ARE THE 3 MAIN ISSUES FACING STUDENTS?

Lack of a sense of belonging.
Support for international students arriving at uni. Timetabling.

WHAT MAKES YOU PROUD TO BE PART OF THE HALLAM COMMUNITY?

I am proud of the support, that us as students give each other, from cheering at varsity to joining in with liberation campaigns and much so more.

WHY SHOULD STUDENTS VOTE FOR YOU?

Being an officer over the past year has taught me that I'm passionate about improving students uni experience and I want to carry on my hard work.

hallamstudentsunion.com/vote

INTERNATIONAL STUDENTS' OFFICER

THE INTERNATIONAL STUDENTS' OFFICER IS THE LEAD REPRESENTATIVE FOR INTERNATIONAL STUDENTS AT HALLAM, WORKING TO IMPROVE THEIR UNIVERSITY EXPERIENCE. THEY ARE ALSO RESPONSIBLE FOR INTERNATIONALISATION EFFORTS, TRYING TO INCREASE HALLAM'S GLOBAL OUTLOOK AND INTERNATIONAL EXPERIENCES FOR UK STUDENTS.



INTERNATIONAL STUDENTS' OFFICER

THE INTERNATIONAL STUDENTS' OFFICER IS THE LEAD REPRESENTATIVE FOR INTERNATIONAL STUDENTS AT HALLAM, WORKING TO IMPROVE THEIR UNIVERSITY EXPERIENCE. THEY ARE ALSO RESPONSIBLE FOR INTERNATIONALISATION EFFORTS, TRYING TO INCREASE HALLAM'S GLOBAL OUTLOOK AND INTERNATIONAL EXPERIENCES FOR UK STUDENTS.



#JOINOURJOURNEY
hallamstudentsunion.com/vote

CANDIDATE FOR INTERNATIONAL STUDENTS' OFFICER



AYOMIDE YUSSUFF

GIVE US 3 WORDS TO DESCRIBE YOURSELF

Jovial, attentive and social.

WHAT IS THE MAIN POLICY YOU WOULD IMPLEMENT IF YOU WON THE ELECTION?

Change how the Uni treats international students.

WHAT MAKES YOU PROUD TO BE PART OF THE HALLAM COMMUNITY?

Being an international student has been the best part of being at Hallam. The beautiful sub communities that make it feel like home away from home.

WHAT ARE THE 3 MAIN ISSUES FACING STUDENTS?

Exclusion. Lack of social communication. Lack of racial inclusion.

WHAT COURSE DO YOU STUDY?

MA Public Relation.

WHY SHOULD STUDENTS VOTE FOR YOU?

Students should vote for me because I believe I have got what it takes to represent the international students of SHU.

CANDIDATE FOR INTERNATIONAL STUDENTS' OFFICER



NARENDER SALARIA

GIVE US 3 WORDS TO DESCRIBE YOURSELF

Dynamic, troubleshooter, selfmotivated.

WHAT IS THE MAIN POLICY YOU WOULD IMPLEMENT IF YOU WON THE ELECTION?

Give fair & accurate representation of university.

WHAT MAKES YOU PROUD TO BE PART OF THE HALLAM COMMUNITY?

Students have the best modules and study material along with the best teaching staff which teaches every thing from basics. Also have the best campus.

WHAT ARE THE 3 MAIN ISSUES FACING STUDENTS?

Fluctuations between online and offline classes. Adapting to local culture. Hard to concentrate.

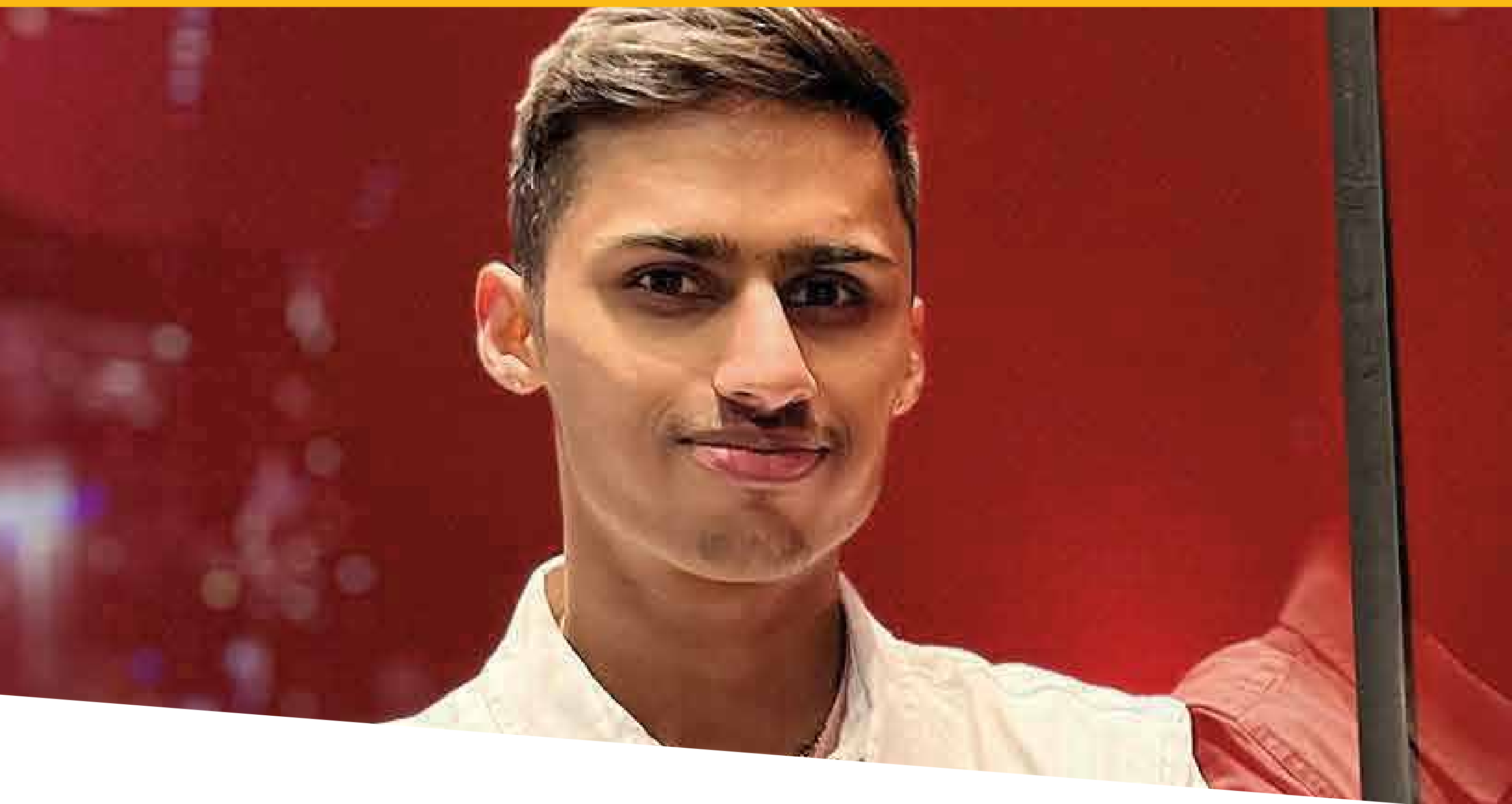
WHAT COURSE DO YOU STUDY?

Msc in logistics & supply chain management.

WHY SHOULD STUDENTS VOTE FOR YOU?

I believe in making a difference and would go above and beyond to help the students, making their experience one to remember.

CANDIDATE FOR INTERNATIONAL STUDENTS' OFFICER



YASHWARDHAN SINGH UMATH

GIVE US 3 WORDS TO DESCRIBE YOURSELF

Social, curious and dedicated.

WHAT IS THE MAIN POLICY YOU WOULD IMPLEMENT IF YOU WON THE ELECTION?

Give fair & accurate representation
of university.

WHAT MAKES YOU PROUD TO BE PART OF THE HALLAM COMMUNITY?

Hallam community is too vibrant and
have a lot of opportunities of
everyone.

WHAT ARE THE 3 MAIN ISSUES FACING STUDENTS?

Lack of support from university.
Financial issues. Feeling outsider.

WHAT COURSE DO YOU STUDY?

B.Engineering with honour in Auto-
motive engineering.

WHY SHOULD STUDENTS VOTE FOR YOU?

I make plans and schedule and
implement then to work in a
effective way.

CANDIDATE FOR INTERNATIONAL STUDENTS' OFFICER



BIJO JOSEPH

GIVE US 3 WORDS TO DESCRIBE YOURSELF

Ambitious, Approachable, Ambivert.

WHAT IS THE MAIN POLICY YOU WOULD IMPLEMENT IF YOU WON THE ELECTION?

Mental wellbeing.
Industrial connect for Jobs.

WHAT MAKES YOU PROUD TO BE PART OF THE HALLAM COMMUNITY?

I found Hallam to be very welcoming and supportive. I strongly believe Hallam is my stepping stone to what I aspire to be.

WHAT ARE THE 3 MAIN ISSUES FACING STUDENTS?

Keeping up with Studies and the course. Part-time Jobs.
Cultural differences.

WHAT COURSE DO YOU STUDY?

MSc Finance and Investment.

WHY SHOULD STUDENTS VOTE FOR YOU?

I believe I will contribute to unbiased, consistent and effective decision making towards the matters and concerns of international students.

CANDIDATE FOR INTERNATIONAL STUDENTS' OFFICER



SWAROOP GOTLUR

GIVE US 3 WORDS TO DESCRIBE YOURSELF

Vocal, Enthusiatic and supportive.

WHAT IS THE MAIN POLICY YOU WOULD IMPLEMENT IF YOU WON THE ELECTION?

Increasing support for international students.

WHAT MAKES YOU PROUD TO BE PART OF THE HALLAM COMMUNITY?

The inclusive culture where all voices can be heard.

WHAT ARE THE 3 MAIN ISSUES FACING STUDENTS?

Geeting support post-arrival.
Current covid challenges.

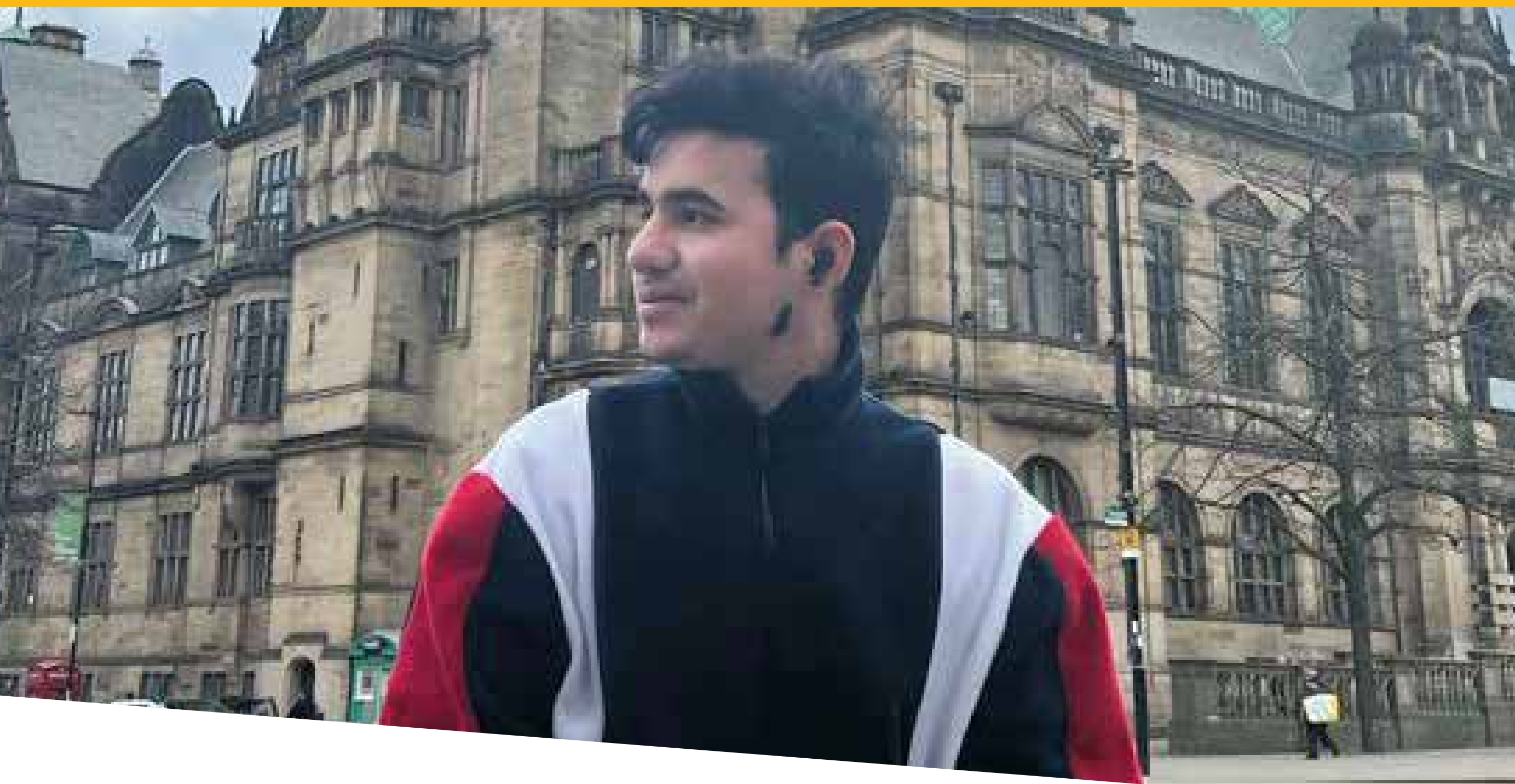
WHAT COURSE DO YOU STUDY?

International tourism and aviation management.

WHY SHOULD STUDENTS VOTE FOR YOU?

I would like to be a voice for international students who are looking for changes in any aspects of the university life.

CANDIDATE FOR INTERNATIONAL STUDENTS' OFFICER



SHUBHANSHU TYAGI

GIVE US 3 WORDS TO DESCRIBE YOURSELF

Orator, Friendly, Confident.

WHAT IS THE MAIN POLICY YOU WOULD IMPLEMENT IF YOU WON THE ELECTION?

Bridge the gap between local and foreign students.

WHAT MAKES YOU PROUD TO BE PART OF THE HALLAM COMMUNITY?

Having a diverse community where students from around the world learn, grow & develop together, and provide global exposure.

WHAT ARE THE 3 MAIN ISSUES FACING STUDENTS?

- 1) Culture shock
- 2) Unable to adopt a new culture
- 3) Unable to make new friends.

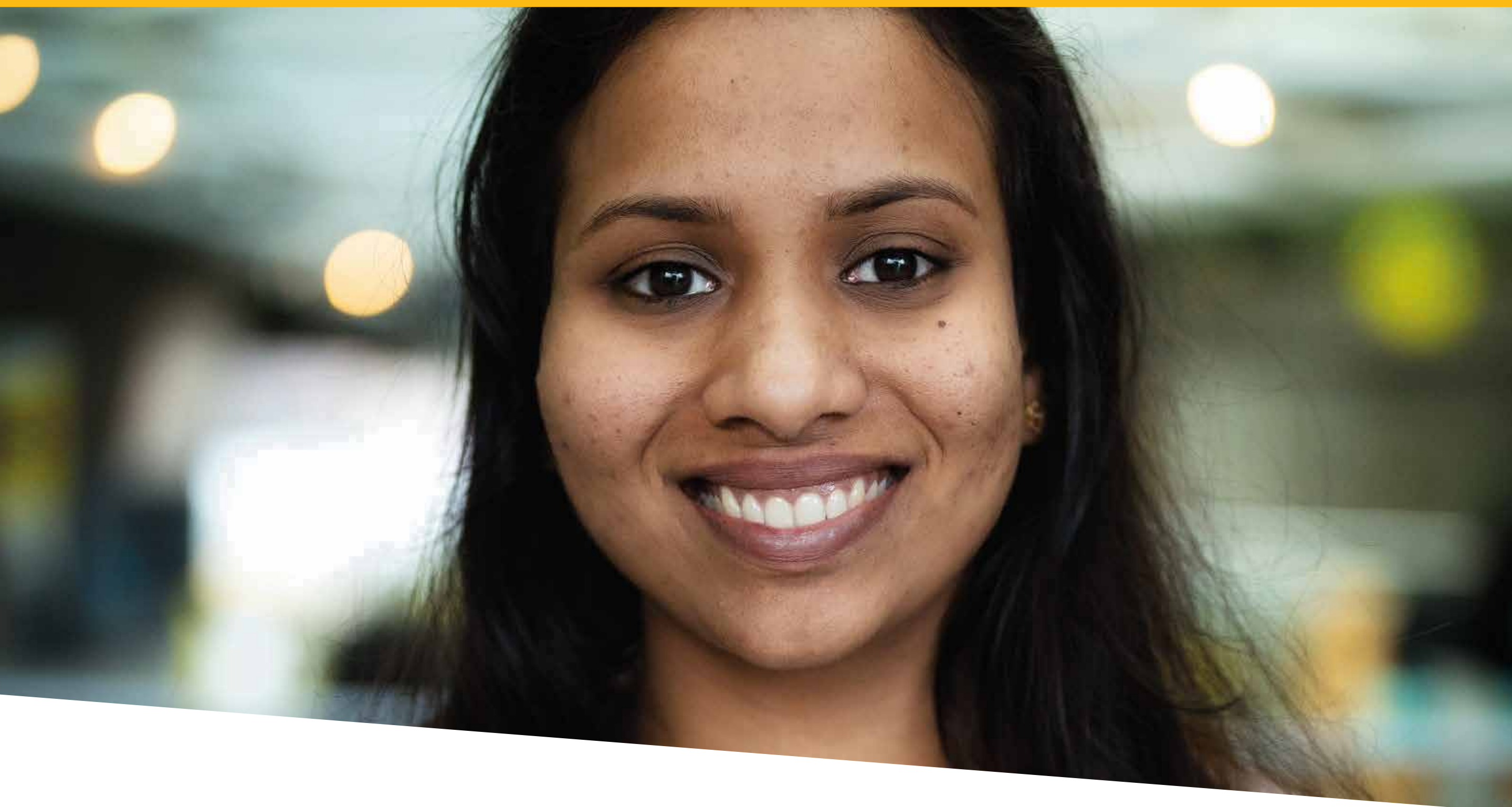
WHAT COURSE DO YOU STUDY?

msc. international hospitality management.

WHY SHOULD STUDENTS VOTE FOR YOU?

I am dynamic from versatile background having experience of different cultures. I am a peoples person. I understand the common problems of students.

CANDIDATE FOR INTERNATIONAL STUDENTS' OFFICER



**JAYALEKSHMI UNNITHAN
BHUVANENDRAN ANITHA**

**GIVE US 3 WORDS TO
DESCRIBE YOURSELF**

Honest, Sharp minded, Confident.

**WHAT IS THE MAIN POLICY YOU
WOULD IMPLEMENT IF YOU
WON THE ELECTION?**

Fee instalment plan, Placement support.

**WHAT MAKES YOU PROUD TO
BE PART OF THE HALLAM
COMMUNITY?**

Welcoming. Feeling of togetherness
Cultural events and support
provided to the societies.

**WHAT ARE THE 3 MAIN ISSUES
FACING STUDENTS?**

Accommodation.
Mental health.
Placements.

WHAT COURSE DO YOU STUDY?

MSc International Business
Management.

**WHY SHOULD STUDENTS
VOTE FOR YOU?**

I strive to give the best output once
assigned to a certain job or duty.
I will be the voice of students in the
University.

CANDIDATE FOR INTERNATIONAL STUDENTS' OFFICER



UJU VANESSA OKOROAFOR

GIVE US 3 WORDS TO DESCRIBE YOURSELF

Handworking, proactive, reliable.

WHAT IS THE MAIN POLICY YOU WOULD IMPLEMENT IF YOU WON THE ELECTION?

Diverse cultural engagement.

WHAT MAKES YOU PROUD TO BE PART OF THE HALLAM COMMUNITY?

The Union where students gain confidentiality and make the right steps. Also, her energetic community of students from a wild range of backgrounds.

WHAT ARE THE 3 MAIN ISSUES FACING STUDENTS?

Accommodation.
Workload and tight academic deadlines. Unemployment.

WHAT COURSE DO YOU STUDY?

MSc International Business Management.

WHY SHOULD STUDENTS VOTE FOR YOU?

I would love to be a voice to the student and represent a wild range of international students in order for them to have the best student experience.

CANDIDATE FOR INTERNATIONAL STUDENTS' OFFICER



NAGESH KATARU

GIVE US 3 WORDS TO DESCRIBE YOURSELF

Student Friendly, Creative, Flexible and Honest.

WHAT IS THE MAIN POLICY YOU WOULD IMPLEMENT IF YOU WON THE ELECTION?

THE VOICE OF INTERNATIONAL STUDENTS.

WHAT MAKES YOU PROUD TO BE PART OF THE HALLAM COMMUNITY?

Fantastic Facilities, Careers Centre, Sheffield Hallam Students' Union, Alumni.

WHAT ARE THE 3 MAIN ISSUES FACING STUDENTS?

Homesickness, Transitioning University Life, Time Management, Cost of an Education and Student Debt.

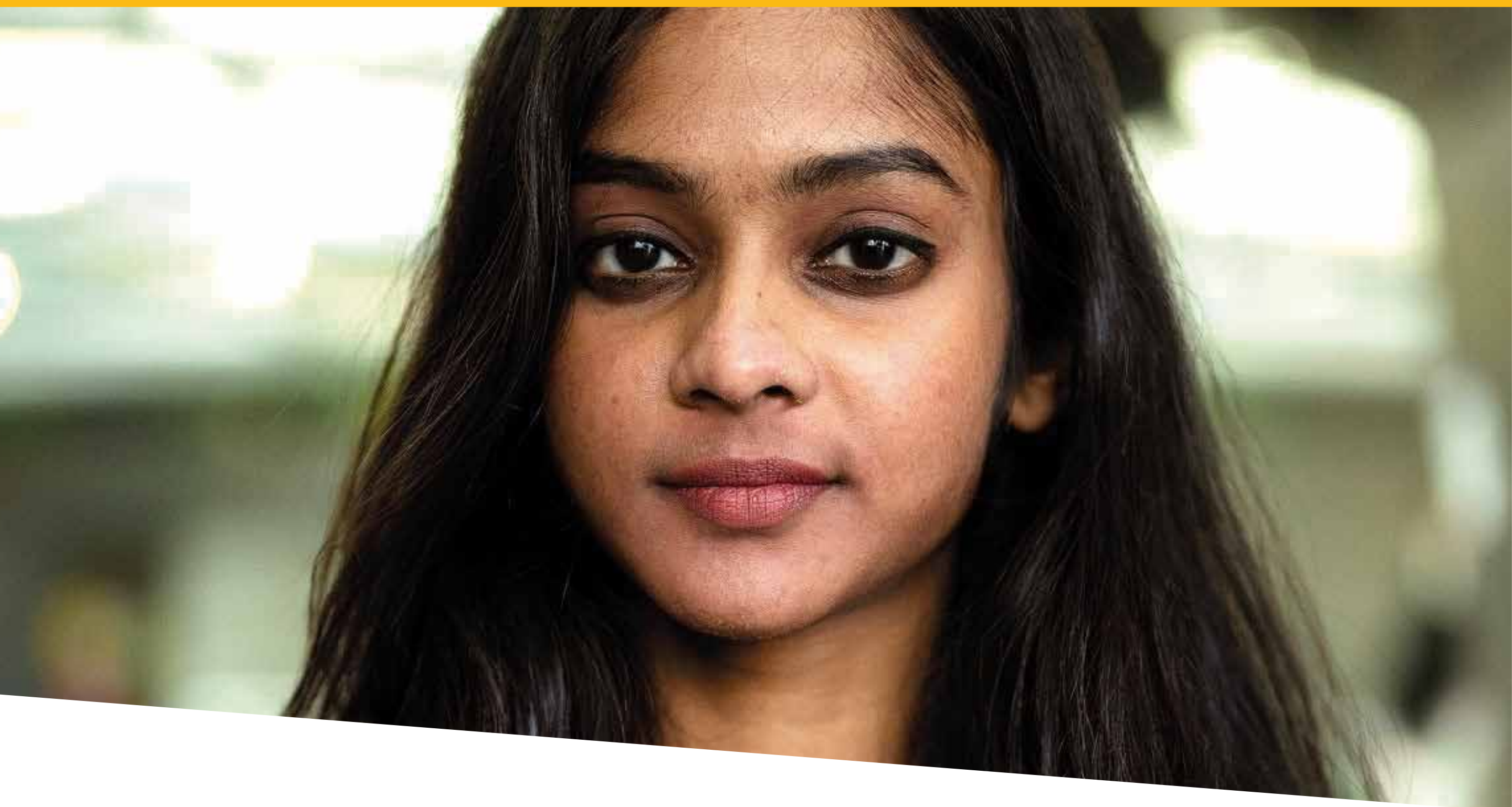
WHAT COURSE DO YOU STUDY?

Global MBA

WHY SHOULD STUDENTS VOTE FOR YOU?

I want to put smiles on the faces of all international students and Transform International Student "I CAN" into "I WILL".

CANDIDATE FOR INTERNATIONAL STUDENTS' OFFICER



NIKITHA KALI

GIVE US 3 WORDS TO DESCRIBE YOURSELF

Assertive, nonchalant and fiery

WHAT IS THE MAIN POLICY YOU WOULD IMPLEMENT IF YOU WON THE ELECTION?

Inclusion - All cultures/communities

WHAT MAKES YOU PROUD TO BE PART OF THE HALLAM COMMUNITY?

To be a part of a community that values integrity and prioritizes social and multicultural events is surely a thing to be proud of.

WHAT ARE THE 3 MAIN ISSUES FACING STUDENTS?

1. Language barrier
2. International Tuition Fee
3. Housing

WHAT COURSE DO YOU STUDY?

Global MBA

WHY SHOULD STUDENTS

Having a place of power will enable me to change good things to better, for all of us.

CANDIDATE FOR INTERNATIONAL STUDENTS' OFFICER



SREEVIYDA BHOOMIREDDY

GIVE US 3 WORDS TO DESCRIBE YOURSELF

Honest, Passionate & Friendly

WHAT IS THE MAIN POLICY YOU WOULD IMPLEMENT IF YOU WON THE ELECTION?

Increase Graduate Employability

WHAT MAKES YOU PROUD TO BE PART OF THE HALLAM COMMUNITY?

Everyone in the Hallam Community has an equal chance to reach their full potential.

WHAT ARE THE 3 MAIN ISSUES FACING STUDENTS?

Employability

Emotional well-being

Financial difficulties due to unpaid placements.

WHAT COURSE DO YOU STUDY?

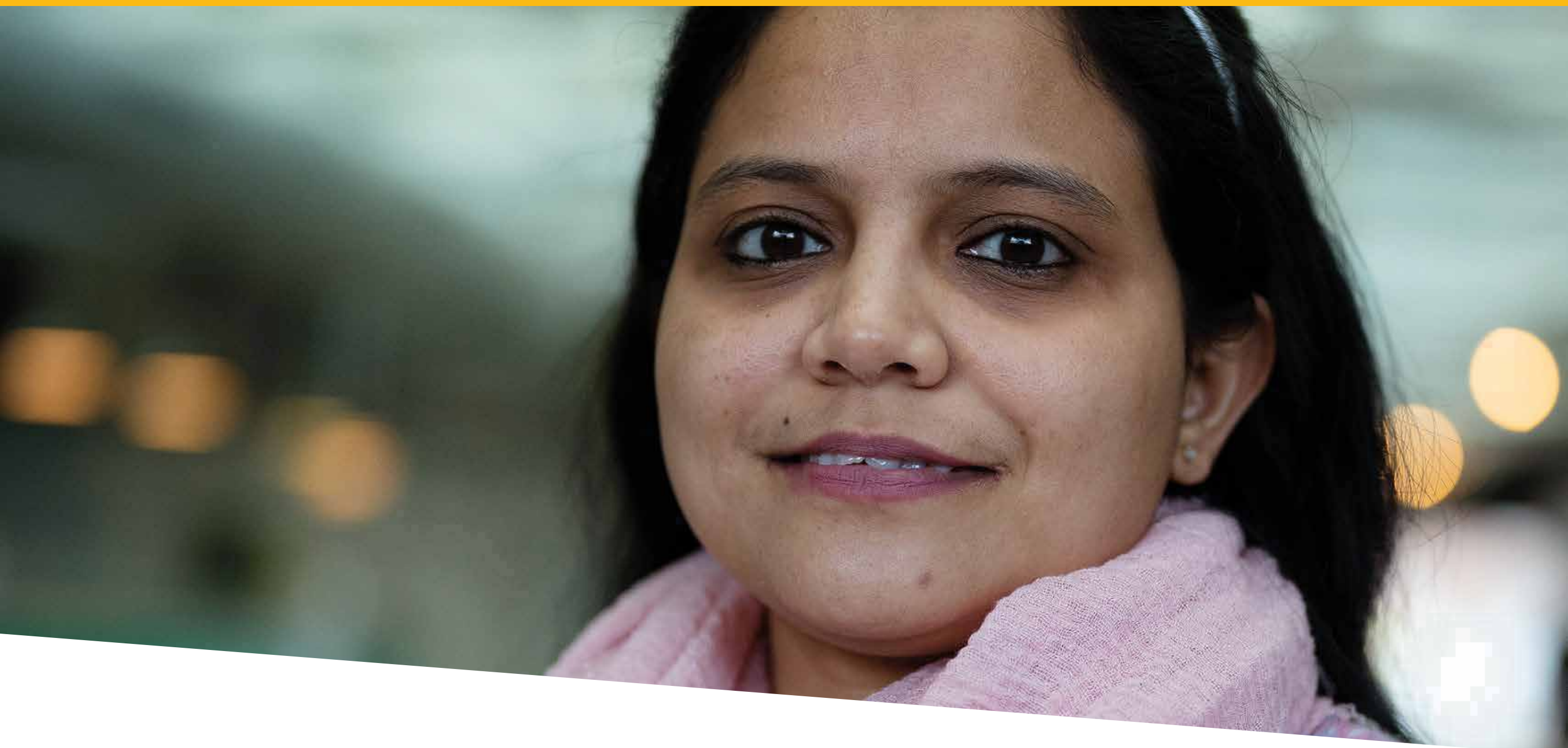
Global MBA

WHY SHOULD STUDENTS

I've dealt with many challenges that international students face, and I'm ready to take responsibility for resolving those issues.

CANDIDATE FOR HEALTH, WELLBEING & LIFE SCIENCES COLLEGE OFFICER

THE HWBLS COLLEGE OFFICER IS YOUR DEDICATED STUDENT LEADER, FOCUSING ON IMPROVING YOUR ACADEMIC AND SOCIAL STUDENT EXPERIENCE. THEY ARE A MEMBER OF KEY UNIVERSITY COMMITTEES, ENABLING THEM TO RAISE YOUR CONCERNS AND IDEAS AT THE HIGHEST LEVELS.



MISBAH TICKLAY

GIVE US 3 WORDS TO DESCRIBE YOURSELF

Vibrant, Optimistic, Confident.

WHAT COURSE DO YOU STUDY?

MSc Applied Sport & Exercise Science.

WHAT IS THE MAIN POLICY YOU WOULD IMPLEMENT IF YOU WON THE ELECTION?

The timeline between submissions and exams.

WHAT ARE THE 3 MAIN ISSUES FACING STUDENTS?

Time management (between academics & part-time job).
Placement/job support.
Accommodation.

WHAT MAKES YOU PROUD TO BE PART OF THE HALLAM COMMUNITY?

As an international student, I am proud to be a part of the Hallam community because it is inclusive and provides equal opportunities to all students.

WHY SHOULD STUDENTS VOTE FOR YOU?

I believe the skills I possess will enable me to deliver on the objectives I wish to do for students to make their University experience remarkable.

WELLBEING, SPORT & PHYSICAL ACTIVITY OFFICER

THE WSPA OFFICER REPRESENTS STUDENTS TO MAKE SURE THEIR VIEWS ABOUT WELLBEING AND HEALTH ARE HEARD BY THE UNIVERSITY AND OTHER SUPPORT ORGANISATIONS. THEY LEAD ON OUR WELL-BEING, SPORT AND PHYSICAL ACTIVITY INITIATIVES, CONTRIBUTING TO OUR STRATEGY AND DELIVERING PROJECTS TO SUPPORT STUDENTS IN THESE AREAS.



CANDIDATE FOR WELLBEING, SPORT & PHYSICAL ACTIVITY OFFICER



CHARLIE BREEN

GIVE US 3 WORDS TO DESCRIBE YOURSELF

Competitive, driven, approachable.

WHAT IS THE MAIN POLICY YOU WOULD IMPLEMENT IF YOU WON THE ELECTION?

Payment Plans in line with Student Finance.

WHAT MAKES YOU PROUD TO BE PART OF THE HALLAM COMMUNITY?

Hallam is a community that is united and tight knit. A community that is small enough to care, but big enough to count!

WHAT ARE THE 3 MAIN ISSUES FACING STUDENTS?

- 1 - Mental Health
- 2 - Inclusive sport
- 3 - Barriers to participation

WHAT COURSE DO YOU STUDY?

Sport Development with Coaching.

WHY SHOULD STUDENTS VOTE FOR YOU?

I want to ensure sport and physical activity is accessible for all and continue the work of previous role holders, who I have worked closely with.

CANDIDATE FOR WELLBEING, SPORT & PHYSICAL ACTIVITY OFFICER



MRUNALINI K DAHIBHATE

GIVE US 3 WORDS TO DESCRIBE YOURSELF

Fearless, Competitive, Adventurous.

WHAT IS THE MAIN POLICY YOU WOULD IMPLEMENT IF YOU WON THE ELECTION?

Sports for you, with you,
through you.

WHAT MAKES YOU PROUD TO BE PART OF THE HALLAM COMMUNITY?

Equality and diversity. Sports has
charismatic power to unite the
people and without different culture
there is no real sport.

WHAT ARE THE 3 MAIN ISSUES FACING STUDENTS?

Funding for better scholarship offers
and leniency in admissions. Support
recourses for mental health.

WHAT COURSE DO YOU STUDY?

MSc. Applied Sports and Exercise
Science

WHY SHOULD STUDENTS VOTE FOR YOU?

We required new innovative ideas
that tackle the new challenges and I
have ability to make the change. I
strongly believe in action not the
promises.

CANDIDATE FOR WELLBEING, SPORT & PHYSICAL ACTIVITY OFFICER



JAMES TEAGUE

GIVE US 3 WORDS TO DESCRIBE YOURSELF

Caring, Welcoming, Understanding.

WHAT IS THE MAIN POLICY YOU WOULD IMPLEMENT IF YOU WON THE ELECTION?

Push for increased transparency and accountability.

WHAT MAKES YOU PROUD TO BE PART OF THE HALLAM COMMUNITY?

Being part of my Snowsports Team has been a family for me and makes me feel part of university.

WHAT ARE THE 3 MAIN ISSUES FACING STUDENTS?

Affordability, Access, Communication.

WHAT COURSE DO YOU STUDY?

Business Studies.

WHY SHOULD STUDENTS VOTE FOR YOU?

Having organised the University Ski Trips in 2021/22, I have credibility of organising major events, and I will make Hallam a better place for all.

CANDIDATE FOR WELLBEING, SPORT & PHYSICAL ACTIVITY OFFICER



ROSA BRYANT

GIVE US 3 WORDS TO DESCRIBE YOURSELF

Outgoing, aspirational, resilient.

WHAT IS THE MAIN POLICY YOU WOULD IMPLEMENT IF YOU WON THE ELECTION?

Increased recruitment and funding help.

WHAT MAKES YOU PROUD TO BE PART OF THE HALLAM COMMUNITY?

The inclusive environment where everyone is accepted and supports each other.

WHAT ARE THE 3 MAIN ISSUES FACING STUDENTS?

Financial Issues & struggles.
Mental Health - highly impacted by Covid.
Work life balance.

WHAT COURSE DO YOU STUDY?

Law with Criminology.

WHY SHOULD STUDENTS VOTE FOR YOU?

I am determined to make a difference and I am friendly and approachable and will always put 100% into finding the best solutions to fit everyone.

SOCIAL SCIENCES & ARTS COLLEGE OFFICER

STUDYING A SOCIAL SCIENCE OR ARTS DEGREE? THEN THE SSA COLLEGE OFFICER IS YOUR DEDICATED STUDENT LEADER, FOCUSING ON IMPROVING YOUR ACADEMIC AND SOCIAL STUDENT EXPERIENCE. THEY ARE A MEMBER OF KEY UNIVERSITY COMMITTEES, ENABLING THEM TO RAISE YOUR CONCERNS AND IDEAS AT THE HIGHEST LEVELS.



SARAH CORNELLY

CANDIDATE FOR SOCIAL SCIENCES & ARTS COLLEGE OFFICER



DAYO EMMANUEL OLADITI

GIVE US 3 WORDS TO DESCRIBE YOURSELF

Disciplined, Goal-oriented,
Leadership.

WHAT IS THE MAIN POLICY YOU WOULD IMPLEMENT IF YOU WON THE ELECTION?

Academic, career, and welfare
improvement.

WHAT MAKES YOU PROUD TO BE PART OF THE HALLAM COMMUNITY?

The spirit of collective growth
amongst students. The aura of
excellence. Inclusion.

WHAT ARE THE 3 MAIN ISSUES FACING STUDENTS?

Learning experience
Employability
Academic support (Assessment &
dissertation)
Financial support

WHAT COURSE DO YOU STUDY?

MA Public Relations.

WHY SHOULD STUDENTS VOTE FOR YOU?

Political experience
Strong Leadership Traits
Commitment to growth
Accessibility
Courageous
Determination.

CANDIDATE FOR SOCIAL SCIENCES & ARTS COLLEGE OFFICER



ZAC LARKHAM

GIVE US 3 WORDS TO DESCRIBE YOURSELF

Hardworking & driven campaigner.

WHAT IS THE MAIN POLICY YOU WOULD IMPLEMENT IF YOU WON THE ELECTION?

Bring back the SU Bar and Coffee Union.

WHAT MAKES YOU PROUD TO BE PART OF THE HALLAM COMMUNITY?

The inspiring work students and staff do every day that makes Hallam what it is makes me so proud to be part of this community

WHAT ARE THE 3 MAIN ISSUES FACING STUDENTS?

Housing rights and the cost of rent
Sexual violence & spiking
Universities being run for profit

WHAT COURSE DO YOU STUDY?

Applied Social Science.

WHY SHOULD STUDENTS VOTE FOR YOU?

I helped win back £1-3 million pounds in rent for students in halls last year in Sheffield; I know how to organise campaigns that help students.

CANDIDATE FOR SOCIAL SCIENCES & ARTS COLLEGE OFFICER



GANSALLO ADEDEJI

GIVE US 3 WORDS TO DESCRIBE YOURSELF

Passionate, Organised, Reliable.

WHAT IS THE MAIN POLICY YOU WOULD IMPLEMENT IF YOU WON THE ELECTION?

Promoting culture of equity, diversity & inclusion.

WHAT MAKES YOU PROUD TO BE PART OF THE HALLAM COMMUNITY?

The acceptance of unique and diverse culture and you'll learn in cutting edge environment with industry leading tutors.

WHAT ARE THE 3 MAIN ISSUES FACING STUDENTS?

School fees (payment options), price friendly accommodation, better understanding of curriculum.

WHAT COURSE DO YOU STUDY?

Msc Public health.

WHY SHOULD STUDENTS VOTE FOR YOU?

You should vote for me because i want to make the changes I've always wanted to see, I want everyone to feel welcomed and have their voices heard.

BUSINESS, TECHNOLOGY & ENGINEERING COLLEGE OFFICER

STUDYING A BUSINESS, TECHNOLOGY OR ENGINEERING DEGREE? THEN THE BTE COLLEGE OFFICER IS YOUR DEDICATED STUDENT LEADER, FOCUSING ON IMPROVING YOUR ACADEMIC AND SOCIAL STUDENT EXPERIENCE. THEY ARE A MEMBER OF KEY UNIVERSITY COMMITTEES, ENABLING THEM TO RAISE YOUR CONCERNS AND IDEAS AT THE HIGHEST LEVELS.



#JOINOURJOURNEY
hallamstudentsunion.com/vote

CANDIDATE FOR BUSINESS, TECHNOLOGY & ENGINEERING COLLEGE OFFICER



OPEYEMI ALLE

GIVE US 3 WORDS TO DESCRIBE YOURSELF

Perceptive, goal getting, efficient.

WHAT IS THE MAIN POLICY YOU WOULD IMPLEMENT IF YOU WON THE ELECTION?

Students well-being, communication and engagement.

WHAT MAKES YOU PROUD TO BE PART OF THE HALLAM COMMUNITY?

The testimonials from the graduates I've met.

WHAT ARE THE 3 MAIN ISSUES FACING STUDENTS?

Communication
Task and time management
Academic support

WHAT COURSE DO YOU STUDY?

International business and management, Postgraduate.

WHY SHOULD STUDENTS VOTE FOR YOU?

My main goal is to ensure that we are properly represented, that our concerns and feedback are not shutdown but properly heard and addressed.

CANDIDATE FOR BUSINESS, TECHNOLOGY & ENGINEERING COLLEGE OFFICER



MOBOLAJI EDUN AJISAFE

GIVE US 3 WORDS TO DESCRIBE YOURSELF

Respectful, friendly, innovative.

WHAT IS THE MAIN POLICY YOU WOULD IMPLEMENT IF YOU WON THE ELECTION?

Seminar class realignment

WHAT MAKES YOU PROUD TO BE PART OF THE HALLAM COMMUNITY?

Sheffield Hallam University has a culture of building world class graduates. My experience on linked in has shown that Hallam alumni are everywhere.

WHAT ARE THE 3 MAIN ISSUES FACING STUDENTS?

Accommodation. Timetable, seminar and lectures alignment. Student car park/ mobility for disabled

WHAT COURSE DO YOU STUDY?

International business management MSC.

WHY SHOULD STUDENTS VOTE FOR YOU?

I have participated actively in my department and college, and I intend to welcome and advocate for ideas for a better BTE from the students.

CANDIDATE FOR BUSINESS, TECHNOLOGY & ENGINEERING COLLEGE OFFICER



SHIVAM KUMAR

GIVE US 3 WORDS TO DESCRIBE YOURSELF

Passionate, Curious, Driven.

WHAT IS THE MAIN POLICY YOU WOULD IMPLEMENT IF YOU WON THE ELECTION?

Peer assistance learning skills
(mentoring system)

WHAT MAKES YOU PROUD TO BE PART OF THE HALLAM COMMUNITY?

Proud to be a part of community
which provide equal and high
exposure to all students willing to
advance their career in field of their
interest.

WHAT ARE THE 3 MAIN ISSUES FACING STUDENTS?

Lack of awareness
Career guidance for future
Understanding and adjusting in new
environment.

WHAT COURSE DO YOU STUDY?

MSc International Tourism and
Hospitality Management.

WHY SHOULD STUDENTS VOTE FOR YOU?

Already contributing my skills and
knowledge as Part Time Student
Rep, Treasurer in TTM society,
Course Rep and campus student
ambassador.

CANDIDATE FOR BUSINESS, TECHNOLOGY & ENGINEERING COLLEGE OFFICER



ASHISH MORE

GIVE US 3 WORDS TO DESCRIBE YOURSELF

Honest, Reliable, Optimistic.

WHAT IS THE MAIN POLICY YOU WOULD IMPLEMENT IF YOU WON THE ELECTION?

Bridging the Staff-Student Gap.

WHAT MAKES YOU PROUD TO BE PART OF THE HALLAM COMMUNITY?

The diversity of students and staff along with individual accessibility to opportunities and resources provided for department specific learning.

WHAT ARE THE 3 MAIN ISSUES FACING STUDENTS?

- Course specific Part Time Jobs
- Mental health accessibility
- Employability and career readiness

WHAT COURSE DO YOU STUDY?

MSc in Logistics and Supply Chain Management.

WHY SHOULD STUDENTS VOTE FOR YOU?

I am a person with experience in various leadership roles who strongly believes in constant improvement by resolving the issue with the right approach.

CANDIDATE FOR BUSINESS, TECHNOLOGY & ENGINEERING COLLEGE OFFICER



FAIZAN NASEER

GIVE US 3 WORDS TO DESCRIBE YOURSELF

Dedicated Communicative Helpful.

WHAT IS THE MAIN POLICY YOU WOULD IMPLEMENT IF YOU WON THE ELECTION?

A refined way to improve placement opportunities.

WHAT MAKES YOU PROUD TO BE PART OF THE HALLAM COMMUNITY?

The sense of belonging and always having somebody to help me in my academic journey throughout my time at the university and having many opportunities.

WHAT ARE THE 3 MAIN ISSUES FACING STUDENTS?

Placement difficulty, exam duration of less than 24hrs, coursework deadlines compiled together.

WHAT COURSE DO YOU STUDY?

Level 5 Chemical Engineering.

WHY SHOULD STUDENTS VOTE FOR YOU?

I want to raise support for a professional development and to enhance their skills, in terms of communication, working with others to seek placements.

WHO IS R.O.N.?

YOU MIGHT HAVE NOTICED THAT THERE'S A CANDIDATE CALLED RON FOR EVERY SINGLE POSITION IN THE STUDENTS' UNION ELECTIONS. ARE YOU WONDERING WHO RON IS?

RON isn't a person, it's an acronym, and it stands for Re-Open Nominations. If you vote for RON, you're telling us that you don't think that any of the candidates is right for the role, and that we should restart the process to find better candidates. If RON gets the most votes, then no candidates win, and we will start the nominations process again.

We think it's important that voters always have the option to vote for RON – the Students' Union leadership should represent you, and if you don't think any candidate represents you, then you should tell us. Remember – if you don't vote, then you can't complain about the result!

DON'T LET YOUR VOTE BE LOST! RANKING CANDIDATES

In many elections, voters can only vote for one candidate (this system is called First Past the Post). If a voter's preferred candidate doesn't get the most votes, then the vote is discounted. Here's an example of what a vote in this system might look like:

Imagine there are four candidates in an Election. One candidate receives 30% of the vote, two receive 25% of the vote each, and the fourth candidate receives 20% of the vote. This means that the candidate with 30% of the vote wins, even though 70% of voters didn't vote for this candidate. Does that sound fair?

In our Elections, we use a system of voting called Alternative Voting. This means that, instead of voting for just one candidate, you can rank candidates in order of preference. You can rank your favourite candidate as #1, your second favourite as #2, and so on.

This makes the process fairer – if your favourite candidate doesn't win, then your vote can still count towards another candidate's vote count. This is much more likely to mean that a candidate wins who most people like.

The way that this process is counted is quite complicated (you can read more about it here) – but it means that you should use your democratic power and rank all candidates that you like when you vote!

You don't have to rank all candidates – only the ones that you think would be a good Officer.